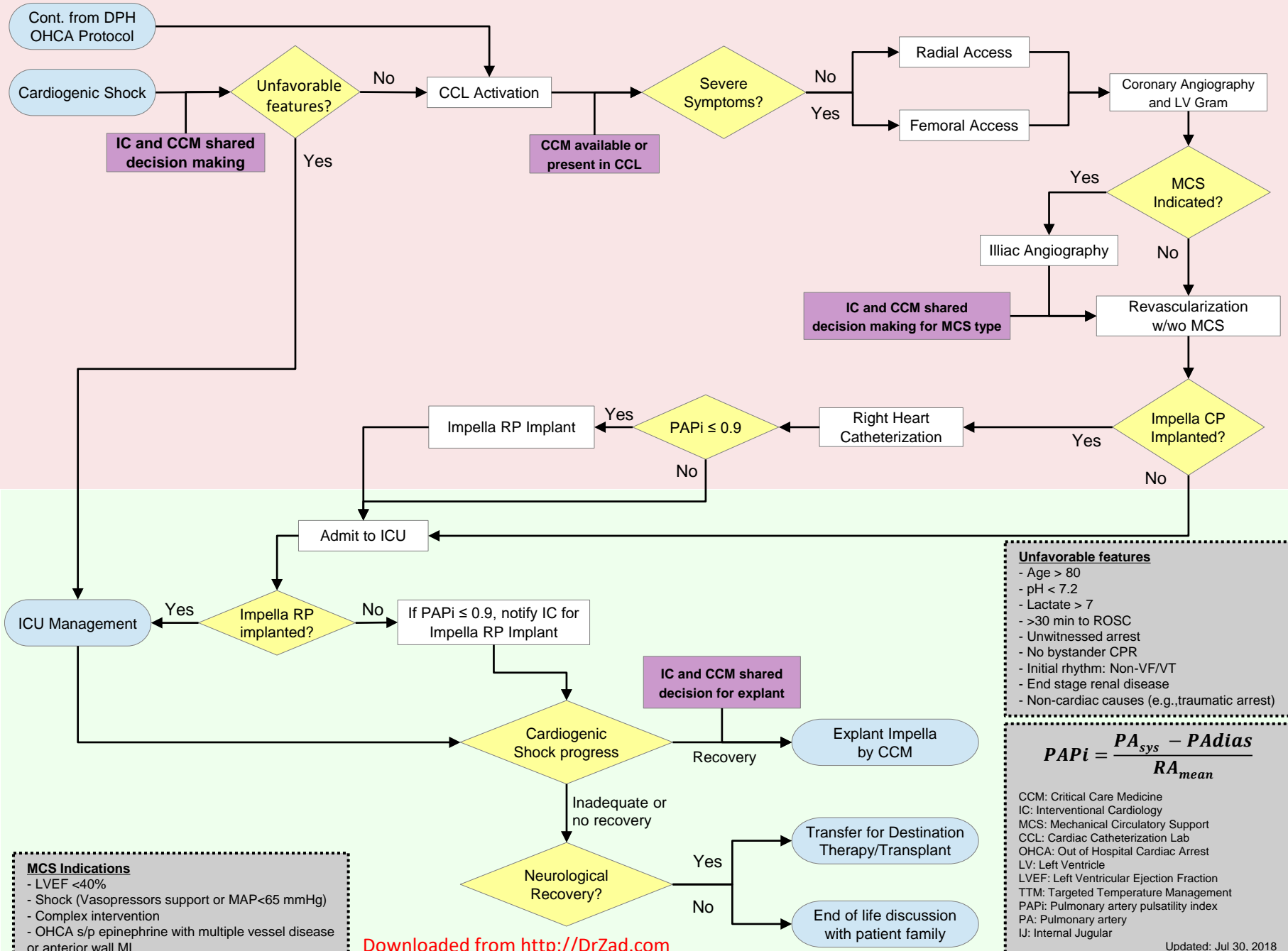


Cardiogenic Shock Protocol



- Unfavorable features**
- Age > 80
 - pH < 7.2
 - Lactate > 7
 - >30 min to ROSC
 - Unwitnessed arrest
 - No bystander CPR
 - Initial rhythm: Non-VF/VT
 - End stage renal disease
 - Non-cardiac causes (e.g., traumatic arrest)

$$PAPi = \frac{PA_{sys} - PADias}{RA_{mean}}$$

CCM: Critical Care Medicine
 IC: Interventional Cardiology
 MCS: Mechanical Circulatory Support
 CCL: Cardiac Catheterization Lab
 OHCA: Out of Hospital Cardiac Arrest
 LV: Left Ventricle
 LVEF: Left Ventricular Ejection Fraction
 TTM: Targeted Temperature Management
 PAPI: Pulmonary artery pulsatility index
 PA: Pulmonary artery
 IJ: Internal Jugular

- MCS Indications**
- LVEF <40%
 - Shock (Vasopressors support or MAP <65 mmHg)
 - Complex intervention
 - OHCA s/p epinephrine with multiple vessel disease or anterior wall MI